

SOLUTION



VPSS 4i₂

CAM for Bending Robots

ARBEND

Software








わかる



たのめ



みる



みる

The Engineering AMADA





The Engineering AMADA

Please read the "Instruction Manual" carefully before use to ensure safety and proper operation.

*The specifications, appearance and equipment are subject to change without notice.
 *For details on the operating environment, please consult your sales representative.
 *The functions may be limited depending on the specifications of the processing machine.
 *The specifications in this catalog are for Japan.

©AMADA CO.,LTD,All Rights Reserved.

AMADA CO., LTD.
 200, Ishida, Isehara-shi, Kanagawa, 259-1196, Japan
www.amada.co.jp

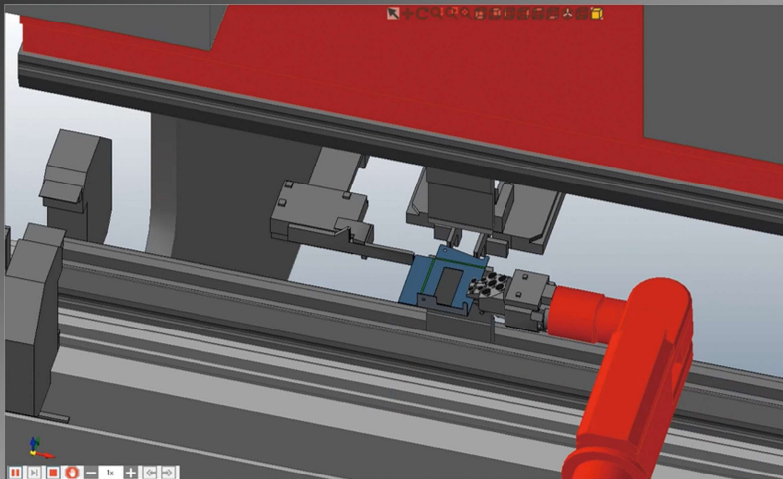
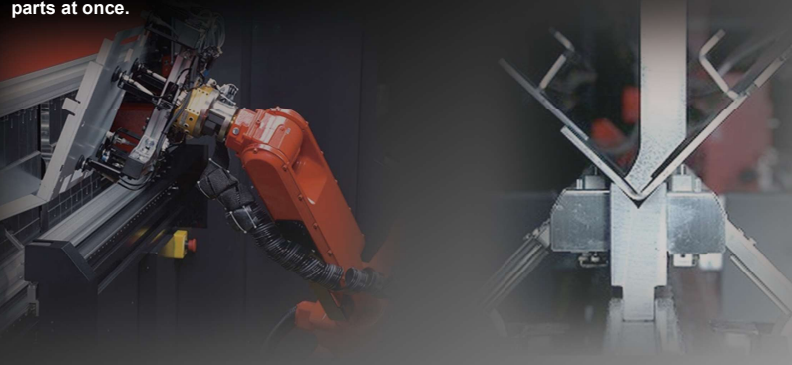
Inquiries



E158-HQ01en
 Jan. 2024

Automation of the bending process Full support for bending robot operation

"Programming Assist" is a function that automatically calculates robot movements, bending sequence, tools used, etc. This function reduces programming time, supporting stable processing, improved productivity and bending feasibility. It also reduces manual teaching work and allows bending programs to be created for multiple parts at once.



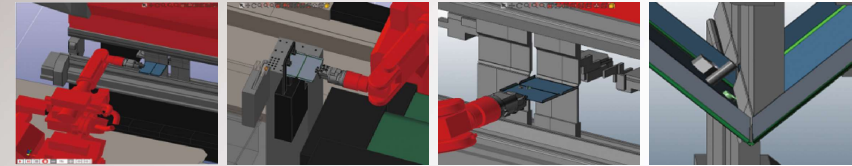
CAM for Bending Robots

VPSS 4ie ARBEND

VPSS 4ie ARBEND features and functions

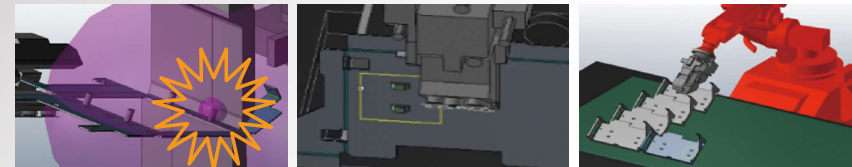
- **Realistic processing simulation**

Full 3D simulation of the entire process allows the bending sequence and robot motion to be verified before production, increasing productivity on the machine.



- **Collision check of formed/non-sheet metal parts**

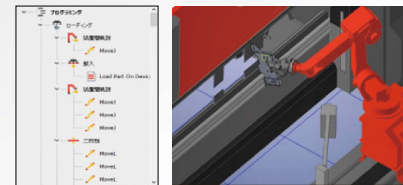
Bending programs can be created onsite without process defects, taking into account high forming and non-sheet metal parts.



- **Programming assist**

The "Programming Assist" function automatically calculates the robot motion, bending sequence, tooling used, etc.

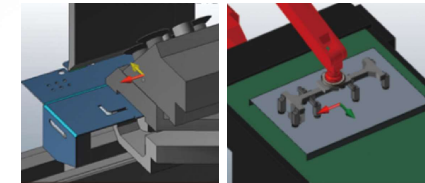
Reduced machine setup is achieved by the creation of a complete bending cell program.



- **Manual program editing**

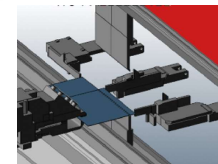
Manual editing provides intuitive and easy-to-understand operations.

This reduces bending program creation time.



- **XY gauge**

Simultaneous 3-axis positioning of back and side gauges reduces correction time.



- **Active magnet floater**

Automatically calculates magnet floater position according to product shape to reduce programming time.

